

MARSHALL ART

22m Survey Vessel



MARSHALL JAKEMAN
MARINE LIMITED



Charter Vessel Specification - Marshall Art

Marshall Jakeman Marine Ltd, Graving Dock, Dockside Road, Middlesbrough, TS3 8AT
Tel. 07734 230496
Email. chris@mjmuk.com



01

GENERAL INFORMATION

Completed in 2010, the Marshall Art has been converted from a pleasure craft to a unique survey vessel.



The Marshall Art offers a standard of accommodation rarely experienced on a survey vessel.

VESSEL PARTICULARS

Date of Launch	30th June 2010
Date of Conversion	1st May 2020
Built by	Barry Marshall
Beam	6m
Overall length	22.9m
Draught	1.7m
Air draught	9m
Cruising Speed	9kn
Survey speed	3.5kn-5kn
Gross Tonnage	57.4T
Fuel	6.4 cuM
Fresh Water	7500 litres
Deck Cargo capacity	3000kg
MCA classification	Category 2 – 60 miles from Safehaven
P.O.B	13 – 8/ 9 for client
Engines	Caterpillar 3126TA 350HP
Generators	1 x 27KVA & 1 x 21KVA 3 phase 415v
Thrusters	Fixed prop bow/stern thrusters
A Frame	SWL 2 Tonnes
Crane	2.3t/m – 370kg @ 5.2m, 720kg @ 3m

NAVIGATION EQUIPMENT

- Furuno TZTBB Navnet Multifunction chartplotter/radar display.
- Furuno DRS6A Radar with XN12A 4ft open array scanner.
- ICOM GM600 A Class VHF2 x ICOM M330 VHF with DSC.
- Furuno Navtex receiver.
- Furuno FA170 AIS.
- Furuno SC70 Satellite Compass.
- Sailor 6110 Inmarsat C.
- Garmin 5012 multifunction 12" touch screen display.
- Garmin 5008 multifunction 8" touch screen display.
- Garmin marine radar scanner.
- Garmin GSD22 depth/echo sounder.





02

CAPABILITIES

The vessel has been carefully modified to offer various survey capabilities.



2 Tonne A-Frame



Survey sensor mount



Well-equipped work stations



HYDROGRAPHIC, GEOPHYSICAL & UXO SURVEY

The Marshall Art is fully equipped with a towing A-Frame, folding knuckle-boom crane and the option of accessible hull mounted or side mounted pole for survey instrumentation. Inside the spacious wheelhouse a generous area is dedicated to online/offline operations. A fly bridge offers ready access to antenna fixtures without working at height complications.

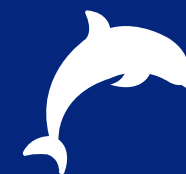
- M20 Deck fixings are pre-mounted at 1m intervals for deck equipment.
- 3 station survey desks with 1 x 2 monitor stations and 2 x 1 monitor stations are inbuilt with remote control for A frame and winch from survey desk.
- We are open to options for towing arrays of magnetometers and have experience designing booms.



ROV SUPPORT

The 2 tonne A -Frame and dedicated client survey station make the Marshall Art an ideal solution for Inspection class ROV's.

The vessel benefits from pre-mounted M20 Deck fixings at 1m intervals for deck equipment. The standard sensor mount can be equipped with a USBL for subsea positioning.

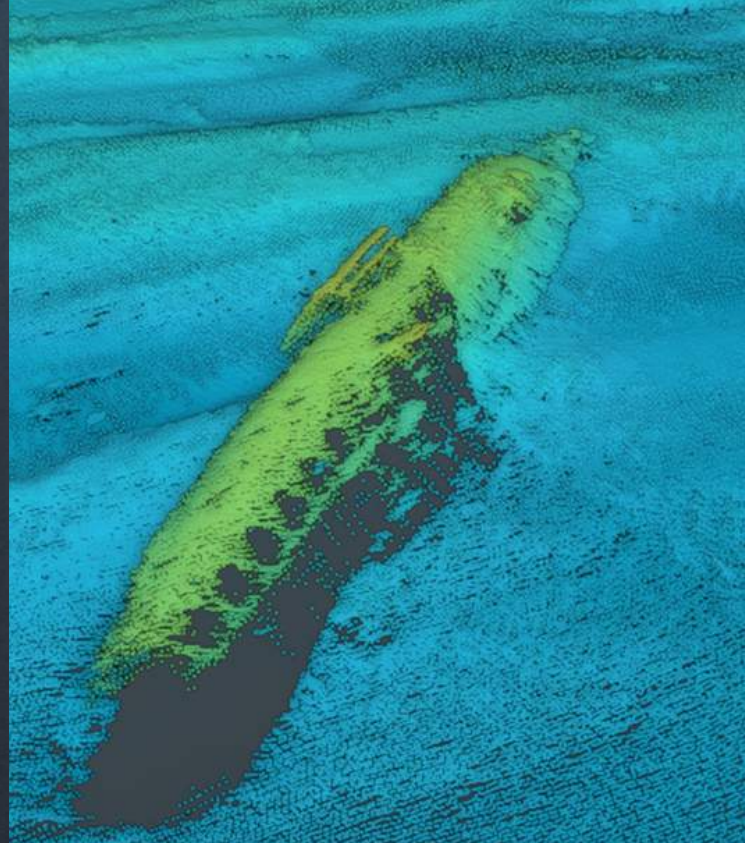


ENVIRONMENTAL SURVEY, BIRD/MAMMAL MONITORING

The dedicated survey station, inbuilt monitors, 2 tonne A-Frame and joystick winch controls enable clients to perform grab sampling and camera drops comfortably.

A sea water wash down pump is provided for environmental samples.

Having an open spacious flybridge, the Marshall Art is ideal for a 360 degree view for bird and mammal observation.





4 Double cabins



Open plan Galley and Mess area

03

ACCOMMODATION

This standard of accommodation is rarely seen on a survey vessel.

Fresh out of refit, the Marshall Art offers 4 Double Berth cabins available for the charterer, all finished to an exceptionally high standard. An open plan Galley and Mess area on the bridge offers a comfortable living area, and there are 4 showers and 4 toilets onboard the vessel in total.





MARSHALL JAKEMAN
MARINE LIMITED



CONTACT US

Get in touch to enquire
about availability

Marshall Jakeman Marine Ltd,
Graving Dock, Dockside Road,
Middlesbrough, TS3 8AT

Tel. 07734 230496
Email. chris@mjmuk.com



Contact Information